

LEGEND			
EXISTING	NEW	LOW DEMO	DEM
WALLS			
NEW/RELOCATED DOOR			

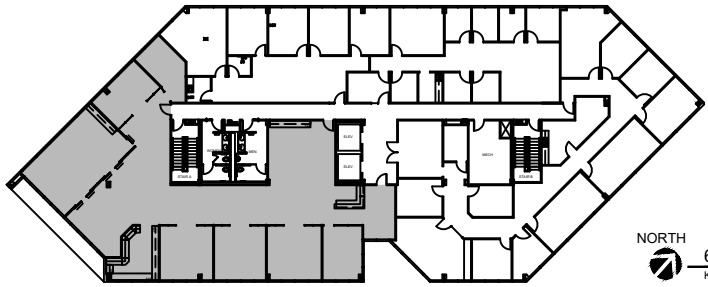
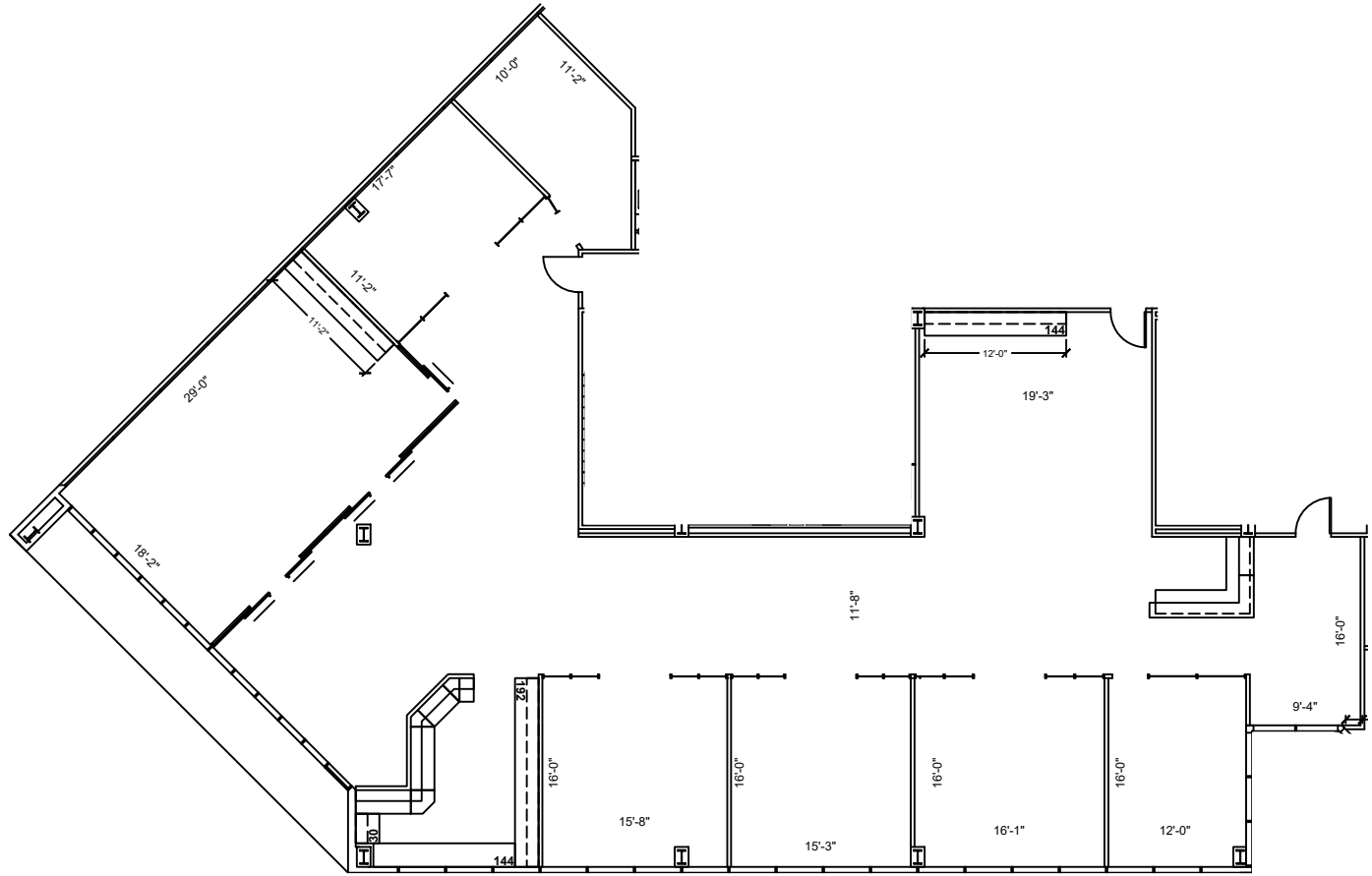
ISSUE DATES	
DATE	REVISION
06-27-2023	EXISTING REVIEW

601 SAWYER
 601 SAWYER STREET, HOUSTON, TX 77007
 SUITE 600

PROJECT:	601 SAWYER
PLANT SCALE:	1/16" = 1'-0"
CHECKED BY:	WM
DESIGNED BY:	WM
FILE NAME:	601 SAWYER

SHEET TITLE
EXISTING FLOOR PLAN

SHEET NUMBER
EX-1



NORTH
6th FLOOR
 KEY PLAN

1 FLOOR PLAN
 SCALE: 1/16"=1'-0"

FLOOR PLANS MAY NOT BE TO SCALE AND MAY NOT REFLECT EXISTING CONDITIONS AND SHALL NOT BE RELIED UPON AS SUCH THESE DRAWINGS ARE DESIGN INTENT AND ARE AN EXHIBIT TO THE LEASE