



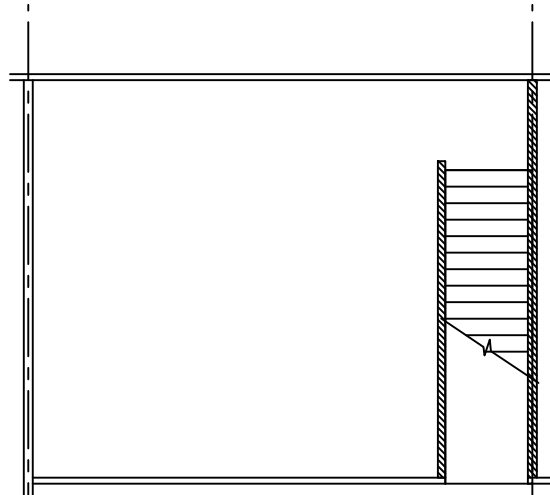
LEGEND		
EXISTING	NEW	DEM
PARTITIONS		
	NEW/RELOCATED DOOR	

ISSUE DATES	
1	08-10-18 LEASING REVIEW
2	08-20-18 LEASING REVIEW

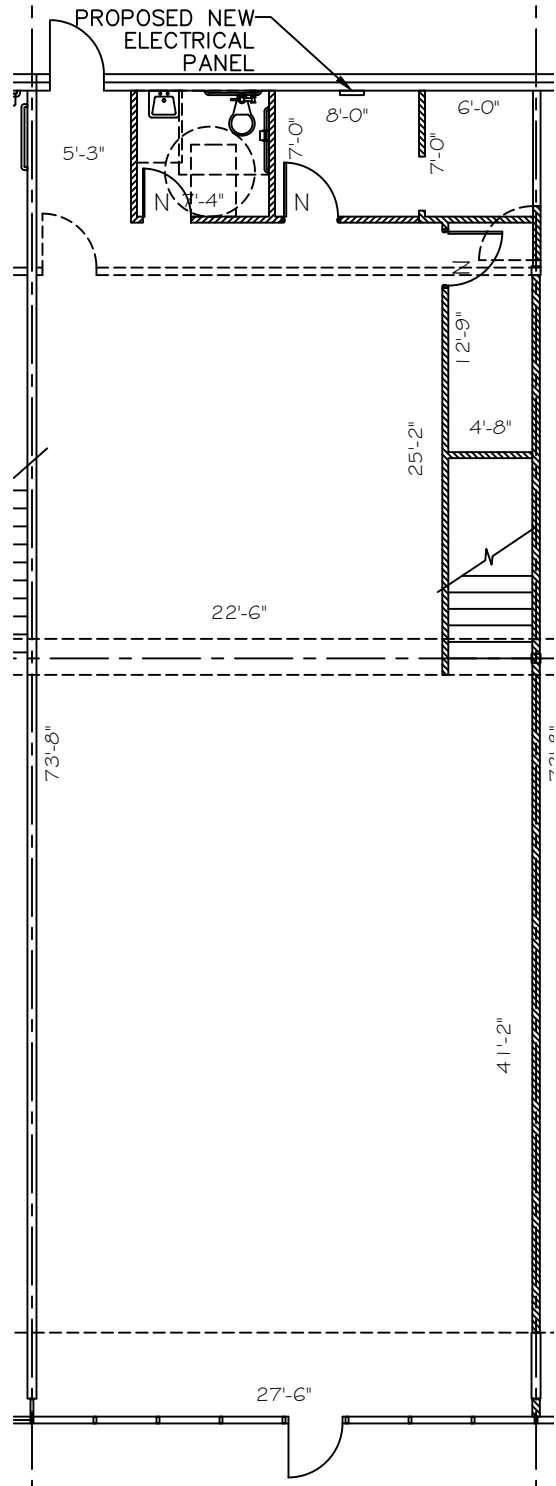
HARWIN FASHION CENTER
 6959-6965 HARWIN DRIVE, HOUSTON, TX 77036
 SUITES 103 & 104

PROJECT 6959-HARWIN FASHION CENTER	
PLOTTED SCALE 1/8"=1'-0"	SHEET SIZE A x S (11)
CHECKED BY WM	DRAWN BY WM
FILENAME 6959-HARWIN FASHION CENTER	
SHEET TITLE SCHEMATIC DESIGN	

SHEET NUMBER
SD-1



2 MEZZANINE PLAN
 SCALE: 3/32"=1'-0"



1 SUITE 103
2,694 NRA
FLOOR PLAN
 SCALE: 3/32"=1'-0"

FLOOR PLANS ARE ARE NOT TO SCALE AND MAY NOT REFLECT EXISTING CONDITIONS.

