

# TIMBERCREEK ATRIUM

5870 Highway 6 North, Houston, TX 77084

HIGHWAY 6 SUBMARKET

**SILVER STAR PROPERTIES REIT, INC.**

5870 Highway 6 North, Houston, TX 77084

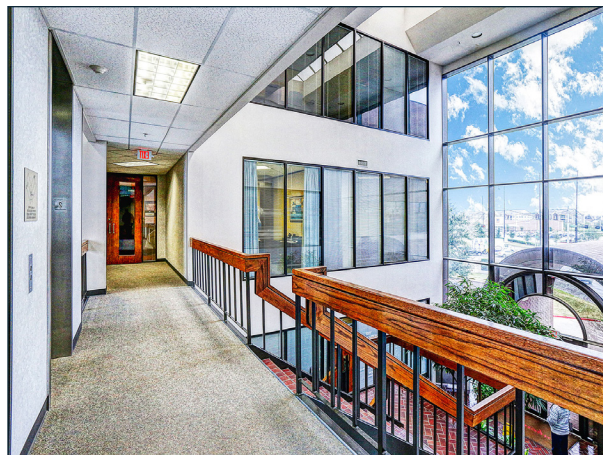
713-467-2222

[leasing@hi-reit.com](mailto:leasing@hi-reit.com)

[www.hi-reit.com](http://www.hi-reit.com)



**SILVER STAR**  
— PROPERTIES —



## TIMBERCREEK ATRIUM

Timbercreek Atrium is a three-story, top tier Class B property conveniently located in the heart of the Highway 6 submarket. This property is in close proximity to some of Houston's most popular retail and fine dining establishments, with easy accessibility to Interstate 10. Timbercreek Atrium boasts an aesthetically pleasing exterior and an equally unique interior with various amenities for its tenants.

## PROPERTY AMENITIES

- Move-in Ready Suites
- Free Initial Test Fits
- On-site Professional Management and Leasing
- Monument Signage with Highway 6 Visibility
- On-site Building Engineer
- After-hours Controlled Access
- 24-hour Monitored Surveillance
- Reserved Garage Parking
- Vending Options Available
- On-site Courtesy Guard

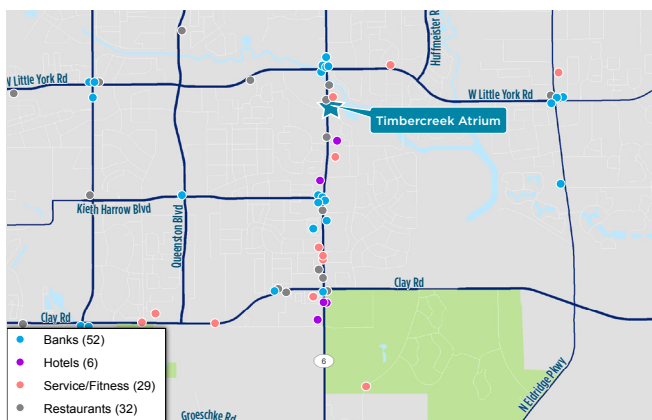
Building Hours:  
Monday - Friday  
7:00am - 6:00pm  
Saturday  
8:00am - 1:00pm

Security Hours:  
Monday - Friday  
3:00pm - 7:00pm

Parking Ratio:  
3:1,000

After Hour HVAC:  
\$40.00 per hour (2-hr max)

Telecom Providers:  
AT&T, Comcast



## SILVER STAR PROPERTIES REIT, INC.

5870 Highway 6 North, Houston, TX 77084

713-467-2222

leasing@hi-reit.com

www.hi-reit.com



**SILVER STAR**  
— PROPERTIES —

The information provided is from sources believed reliable. Silver Star Property Management, Inc., makes no guarantees, warranties, or representations as to the completeness or accuracy herein. The price or condition prior to sale or lease are subject to change. Amount of free rent given is based on size and length of tenancy, restrictions apply. Condition is only applicable when deal is independent of a broker. This property is leased and managed by: Silver Star Property Management, Inc - Corporate Broker License No. 9002307