



LEGEND

EXISTING	NEW	DEMO
PARTITIONS		
NEW/RELOCATED DOOR		

ISSUE DATES

NO.	DATE	REVISION
1	08-01-19	LEASING REVIEW

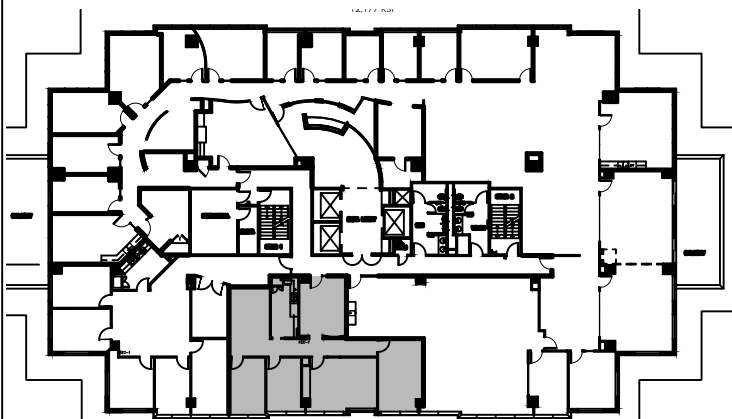
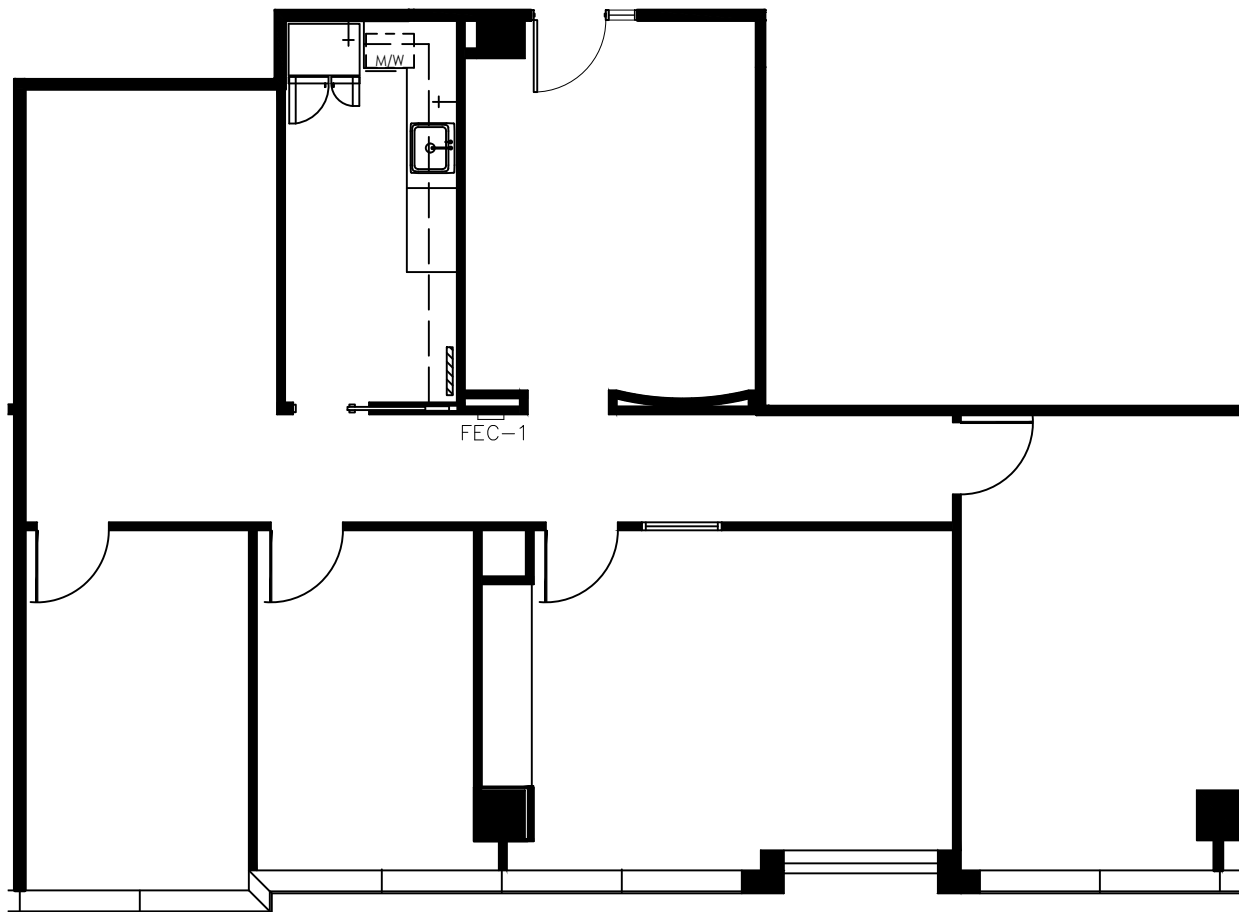
SKYMARK  
 1521 N COOPER STREET ARLINGTON, TX 76011  
 SUITE 630

PROJECT:	914-SKYMARK
PLOTTED SCALE:	1/8"=1'-0"
CHECKED BY:	WM
FILE NAME:	914-SKYMARK

SHEET TITLE  
 EXISTING  
 PLAN

SHEET NUMBER

EX-1



5th FLOOR  
 KEY PLAN

1 FLOOR PLAN  
 SCALE: 1/8"=1'-0"

SUITE 630  
 1,780 NRA

FLOOR PLANS MAY NOT BE TO SCALE AND MAY NOT REFLECT EXISTING CONDITIONS AND SHALL NOT BE RELIED UPON AS SUCH THESE DRAWINGS ARE DESIGN INTENT AND ARE AN EXHIBIT TO THE LEASE