

HARTMAN MANAGEMENT  
2909 HILLCROFT, SUITE 420  
HOUSTON, TX 77057



LEGEND			
	EXISTING	NEW	DEMO
PARTITIONS	—	—	—
NEW/RELOCATED DOOR	—	—	—

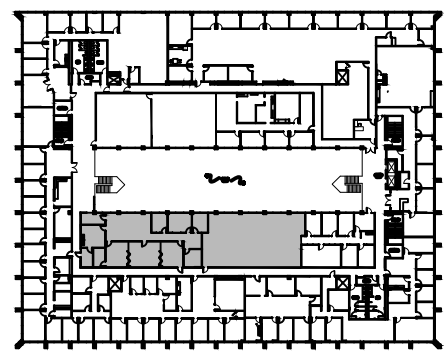
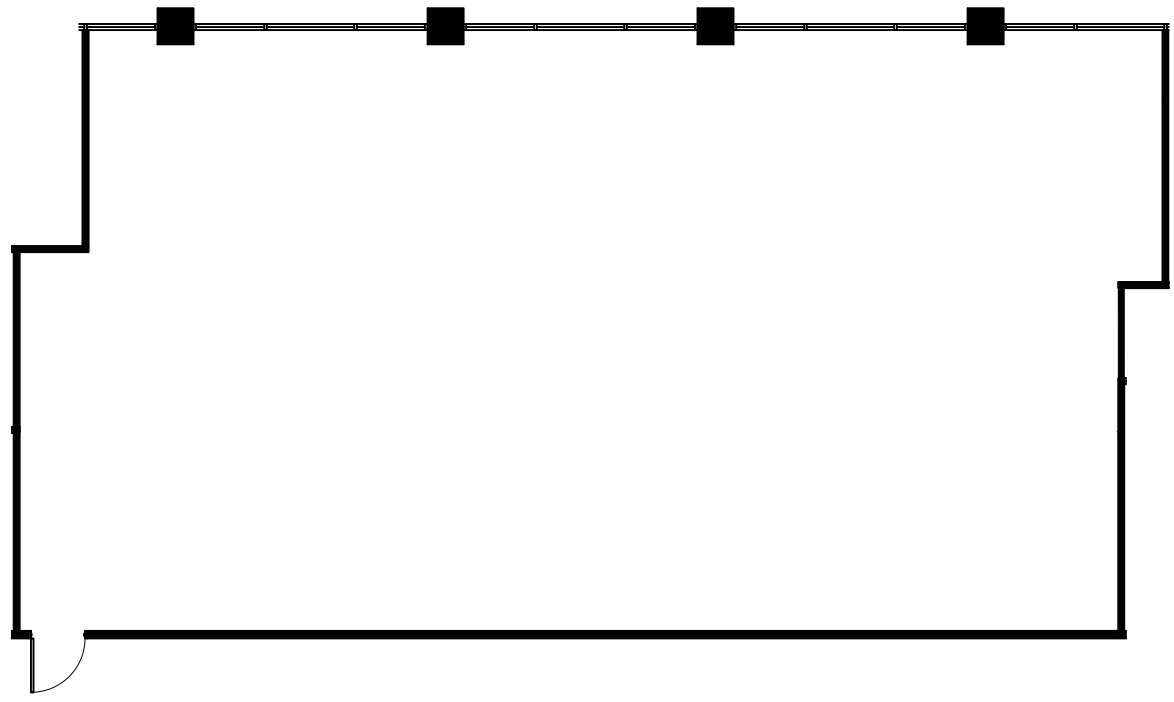
ISSUE DATES		
NO.	DATE	REVISION
1	12-07-22	LEASING REVIEW

**CORPORATE PARK PLACE**  
1333 CORPORATE DRIVE, IRVING, TX 75038  
SUITE 322

PROJECT:	325-CORPORATE PARK PLACE
PLOT SCALE:	1/8" = 1'-0"
SHEET SIZE:	18.5" x 11"
CHECKED BY:	AE
DRAWN BY:	AE
FILE NAME:	325-CORPORATE PARK PLACE

SHEET TITLE  
**EXISTING PLAN**

SHEET NUMBER  
**EX-1**



NORTH  
3rd FLOOR  
KEY PLAN

**SUITE 322**  
**2,530 NRA**

**1 FLOOR PLAN**  
SCALE: 3/32"=1'-0"

FLOOR PLANS MAY NOT BE TO SCALE AND MAY NOT REFLECT EXISTING CONDITIONS AND SHALL NOT BE RELIED UPON AS SUCH